



UNITED STATES ENVIRONMENTAL PROTECTION AGENCY  
WASHINGTON, DC 20460

OFFICE OF CHEMICAL SAFETY  
AND POLLUTION PREVENTION

December 14, 2020

Kylli Paavola  
Sr. Compliance Specialist  
Liphatech, Inc.  
3600 W. Elm Street  
Milwaukee, WI 53209

Subject: Label Amendment – Adding bushy-tailed woodrat to the label  
Product Name: Rozol Pellets  
EPA Registration Number: 7173-151  
Application Date: June 10, 2020  
Decision Number: 563896

Dear Ms. Paavola:

The amended label referred to above, submitted in connection with registration under the Federal Insecticide, Fungicide and Rodenticide Act, as amended, is acceptable. This approval does not affect any conditions that were previously imposed on this registration. You continue to be subject to existing conditions on your registration and any deadlines connected with them.

A stamped copy of your labeling is enclosed for your records. This labeling supersedes all previously accepted labeling. You must submit one copy of the final printed labeling before you release the product for shipment with the new labeling. In accordance with 40 CFR 152.130(c), you may distribute or sell this product under the previously approved labeling for 18 months from the date of this letter. After 18 months, you may only distribute or sell this product if it bears this new revised labeling or subsequently approved labeling. "To distribute or sell" is defined under FIFRA section 2(gg) and its implementing regulation at 40 CFR 152.3.

Should you wish to add/retain a reference to the company's website on your label, then please be aware that the website becomes labeling under the Federal Insecticide Fungicide and Rodenticide Act and is subject to review by the Agency. If the website is false or misleading, the product would be misbranded and unlawful to sell or distribute under FIFRA section 12(a)(1)(E). 40 CFR 156.10(a)(5) list examples of statements EPA may consider false or misleading. In addition, regardless of whether a website is referenced on your product's label, claims made on the website may not substantially differ from those claims approved through the registration process. Therefore, should the Agency find or if it is brought to our attention that a website contains false or misleading statements or claims substantially differing from the EPA approved registration, the website will be referred to the EPA's Office of Enforcement and Compliance.

Your release for shipment of the product constitutes acceptance of these conditions. If these conditions are not complied with, the registration will be subject to cancellation in accordance

Page 2 of 2  
EPA Reg. No. 7173-151  
Decision No. 563896

with FIFRA section 6. If you have any questions, please contact Jasmin Jackson by phone at 703-347-0732, or via email at [jackson.jasmin@epa.gov](mailto:jackson.jasmin@epa.gov).

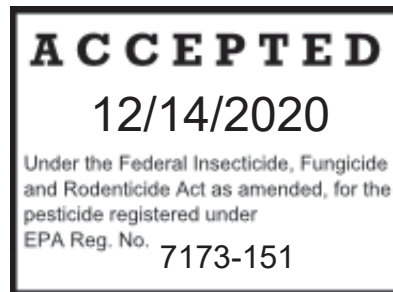
Sincerely,

A handwritten signature in blue ink, appearing to read "Gene Benbow".

Gene Benbow, Product Manager 7  
Invertebrate & Vertebrate Branch 3  
Registration Division (7505P)  
Office of Pesticide Programs

Enclosure: Approval Letter & Stamped Label

Center/Front Panel:



# Rozol Pellets

OPTIONAL: [ALL WEATHER BAIT FOR WET OR DRY AREAS]

**FOR INDOOR AND OUTDOOR USE**

**KILLS NORWAY RATS, ROOF RATS AND HOUSE MICE**

*(Optional when other species are listed as target species on label directions:  
KILLS OTHER RODENT SPECIES AS LISTED ON THIS LABEL)*

*(Optional when other species are listed as target species on label directions:  
KILLS RATS, MICE, PACK RATS\* AND MEADOW VOLES\*)*

Active Ingredient: chlorophacinone . . . . .	0.005%
Other Ingredients . . . . .	<u>99.995%</u>
Total . . . . .	100.000%

**KEEP OUT OF REACH OF CHILDREN**

## CAUTION

See [side][back][inner][outer] [panel][carton][label] for additional precautionary statements.

(Liphatech Logo)  
Liphatech, Inc.  
3600 W. Elm Street  
Milwaukee, WI 53209  
414-351-1476

**Net Weight:**  
4 lbs up to 2000 lbs

\*Use not permitted in California

EPA Reg. No. 7173-151  
EPA Est. No. 7173-WI-1

Product No.:  
Label No:

side/back/inner panel:

<b>FIRST AID</b>	
<b>If swallowed:</b>	<ul style="list-style-type: none"><li>• Call a poison control center or doctor immediately for treatment advice.</li><li>• Have person sip a glass of water if able to swallow.</li><li>• Do not induce vomiting unless told to do so by the poison control center or doctor.</li><li>• Do not give anything by mouth to an unconscious person.</li></ul>
<b>If in eyes:</b>	<ul style="list-style-type: none"><li>• Hold eye open and rinse slowly and gently with water for 15-20 minutes.</li><li>• Remove contact lenses, if present, after the first 5 minutes, then continue rinsing eye.</li><li>• Call a poison control center or doctor immediately for treatment advice.</li></ul>
<b>If on skin or clothing:</b>	<ul style="list-style-type: none"><li>• Take off contaminated clothing.</li><li>• Rinse skin with plenty of water for 15-20 minutes.</li><li>• Call a poison control center or doctor immediately for treatment advice.</li></ul>
<b>If inhaled:</b>	<ul style="list-style-type: none"><li>• Move person to fresh air.</li><li>• If person is not breathing, call an ambulance, then give artificial respiration, preferably mouth-to-mouth, if possible.</li><li>• Call a poison control center or doctor immediately for treatment advice.</li></ul>
Have the product container or label with you when calling a poison control center or doctor, or going for treatment.	
<b>TREATMENT FOR PET POISONING:</b> If animal eats bait, call veterinarian at once.	
<b>NOTE TO PHYSICIAN OR VETERINARIAN:</b> Contains the anticoagulant chlorophacinone. If swallowed, this material may reduce the clotting ability of blood and cause bleeding. For humans or animals ingesting bait and/or showing obvious poisoning symptoms (bleeding or prolonged prothrombin times), give Vitamin K <sub>1</sub> intramuscularly or orally.	

### **PRECAUTIONARY STATEMENTS**

#### **HAZARD TO HUMANS AND DOMESTIC ANIMALS**

**CAUTION:** Harmful if swallowed, absorbed through the skin, or if inhaled. Avoid contact with eyes, skin or clothing. Avoid breathing dust. Keep away from children, domestic animals and pets. All handlers (including applicators) must wear long pants, shoes, socks, and waterproof gloves. Any person who retrieves carcasses or unused bait following application of this product must wear waterproof gloves.

**User Safety Requirements:** Follow manufacturer's instructions for cleaning/maintaining PPE. If no such instructions for washables exist, use detergent and hot water. Keep and wash PPE separately from other laundry. Remove PPE immediately after handling this product. Wash the outside of gloves before removing them. As soon as possible, wash hands thoroughly after applying bait and before eating, drinking, chewing gum, using tobacco or using the toilet, and change into clean clothing.

**ENVIRONMENTAL HAZARDS:** This product is extremely toxic to mammals and birds. Dogs, cats and other predatory and scavenging mammals and birds might be poisoned if they feed upon animals that have eaten this bait. Do not apply directly to water, or to areas where surface water is present, or to intertidal areas below the mean high water mark. Do not contaminate water when disposing of equipment wash water or rinsate.

**STORAGE AND DISPOSAL:** Do not contaminate water, food or feed by storage or disposal.  
**Pesticide Storage:** Store in original container in a cool, dry place inaccessible to children and pets.  
**Pesticide Disposal:** Wastes resulting from the use of this product may be disposed of in trash or at an approved waste disposal facility.  
**Container Handling:** Nonrefillable container. Do not reuse or refill this container. **[Plastic:]** Completely empty container, then offer for recycling or reconditioning; or puncture and dispose of in a sanitary landfill. **[Paper:]** Completely empty container, then dispose of empty container in trash or at an approved waste disposal facility.

side/back/inner panel:

### DIRECTIONS FOR USE

It is a violation of Federal law to use this product in a manner inconsistent with its labeling.

**READ THIS LABEL** and follow all use directions and precautions. Use only for the sites, pests, and application methods described on this label.

**IMPORTANT:** Do not expose children, pets or other nontarget animals to rodenticides. To help prevent accidents:

1. Store product not in use in a location out of reach of children and pets.
2. Apply bait in locations out of reach of children, pets, domestic animals, and nontarget wildlife, or in tamper-resistant bait stations. These stations must be resistant to destruction by dogs and children under six years of age, and must be used in a manner that prevents such children from reaching into bait compartments and obtaining bait. If bait can be shaken from stations when they are lifted, units must be secured or otherwise immobilized. Even stronger bait stations are needed in areas open to hoofed livestock, raccoons, bears, other potentially destructive animals, or in areas prone to vandalism.
3. Dispose of product container, unused, spoiled, and unconsumed bait as specified on this label.

**Note:** Bait stations are mandatory for outdoor, above-ground use. Tamper-resistant bait stations must be used if children, pets, non-target mammals, or birds may access the bait.

**USE RESTRICTIONS:** This product can only be used to control Norway rats, roof rats and house mice

(Optional species and restriction that may be listed on label as target pests:)

Cotton rat\* (*Sigmodon hispidus*)

Meadow vole\* (*Microtus pennsylvanicus*)

Eastern harvest mouse\* (*Reithrodontomys humuli*)

White-throated woodrat\* (*Neotoma albigula*)

Golden mouse\* (*Ochrotomys nuttalli*)

Southern plains woodrat\* (*Neotoma micropus*)

Polynesian rat\* (*Rattus exulans*)

Bushy-tailed woodrat\* (*Neotoma cinerea*)

Mexican woodrat\* (*Neotoma mexicana*)

\*Not permitted for use against the following species in California: Cotton rat, Eastern harvest mouse, Golden mouse, Polynesian rat, Meadow vole, White-throated woodrat, Southern plains woodrat, Bushy-tailed woodrat, and Mexican woodrat.

in and within 100 feet of man-made structures constructed in a manner so as to be vulnerable to commensal rodent invasions and/or to harboring or attracting rodent infestations. Examples of such structures include homes and other permanent or temporary residences, food processing facilities, industrial and commercial buildings, trash receptacles, agricultural and public buildings, transport vehicles (ships, trains, aircraft), docks and port or terminal buildings, and related structures around and associated with these sites. Fence and perimeter baiting beyond 100 feet from a structure, as defined above, is prohibited. Do not sell this product in individual containers holding less than 4 pounds of bait. Do not place near or inside ventilation duct openings. Do not contaminate water, food, feedstuffs, food or feed handling equipment, or milk or meat handling equipment. Do not apply directly to food or feed crops. Do not broadcast bait.

**Selection of Treatment Areas:** Determine areas where rats and/or house mice [rats, mice and/or meadow voles] will most likely find and consume bait. Generally, these are along walls, by gnawed openings, in corners and concealed places, between floors or walls, in or beside burrows, or in locations where rats and/or house mice or their signs have been observed. Remove as much alternative food as possible.

#### APPLICATION DIRECTIONS:

**House Mice [Mice and Meadow Voles\*]:** Apply 1/4 to 1/2 ounces per placement, usually spaced 8 to 12 feet apart. Up to 2 ounces may be needed at points of very high ~~house mouse~~ activity. Maintain a constant supply of fresh bait for 15 days or until signs of ~~house mouse~~ activity cease.

**Rats:** Apply 4 to 16 ounces per placement, usually spaced 15 to 30 feet apart. Maintain a constant supply of fresh bait for 10 days or until signs of rat activity cease. This product may be applied to active rodent burrows ~~to control Norway rats and roof rats~~ within or beyond 100 feet of buildings and man-made structures, provided that infestations of these rodents have been confirmed. Bait must be placed no less than 6 inches into active ~~Norway/roof~~ rat burrows. Because ~~Norway/roof~~ rat infestations may occur in areas farther than 100 feet from buildings and man-made structures when the rodents have ample supplies of food and cover, efforts should be made to remove food trash, garbage, clutter, and debris. Do not broadcast bait.

side/back/inner panel:

**Follow-up:** Replace contaminated or spoiled bait immediately. Wearing waterproof gloves, collect and dispose of all visible dead animals and leftover bait, as well as any bait that has become accessible to non-target animals. To discourage reinfestation, limit sources of rodent food, water and harborage as much as possible. If reinfestation does occur, repeat treatment. For a continuous infestation, set up permanent bait stations and replenish bait as needed.

**WARRANTY:** To the extent consistent with applicable law, seller makes no warranty, expressed or implied, concerning the use of this product other than indicated on the label. Buyer assumes all risk of use and/or handling of this material when such use and/or handling is contrary to label instructions.

*Optional Text/ Claims/ Pictures:*

This bait [product] [alternate brand name] is attractive to rodents

This bait [product] [alternate brand name] is palatable

Helps stop damage caused by rodents

Controls rodents

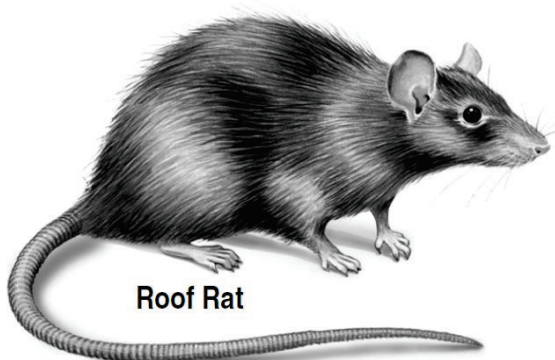
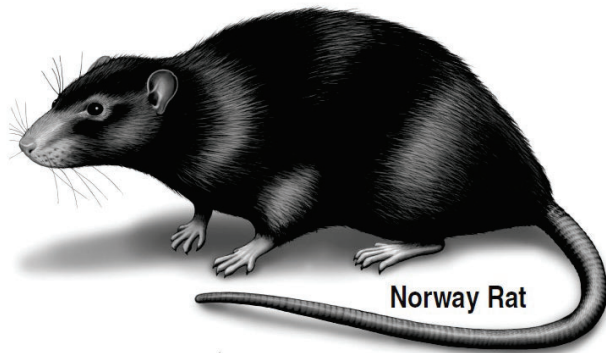
Effective control

Weather-resistant

Paraffinized pellets

Made [Manufactured] in U.S.A.

Satisfaction guaranteed or your money back





**House Mouse**